

124°W 123°W 122°W 121°W


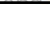
49°N 48°N 47°N 46°N






Washington Domain

July 2011

RMIS Regions

-  GRAY - Grays Harbor
-  HOOD - Hood Canal
-  JUAN - Strait of Juan de Fuca
-  MPS - Mid Puget Sound
-  NOWA - Northern Washington
-  NPS - Northern Puget Sound
-  NWC - Northern Washington Coast
-  SKAG - Skagit R
-  SPS - Southern Puget Sound
-  WILP - Willapa Bay
-  WAGN - Washington, general

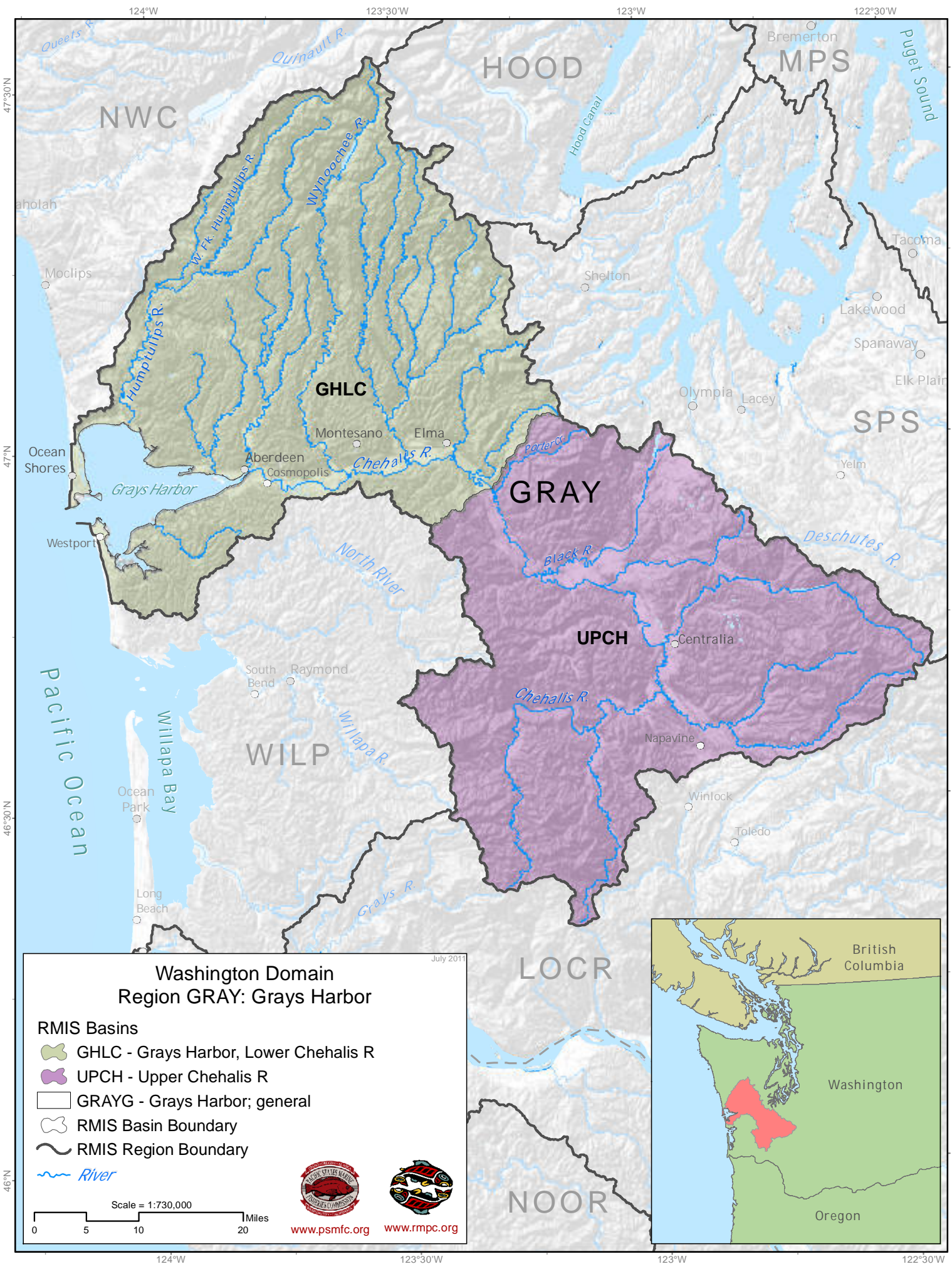
-  RMIS Basin Boundary
-  RMIS Region Boundary
-  River

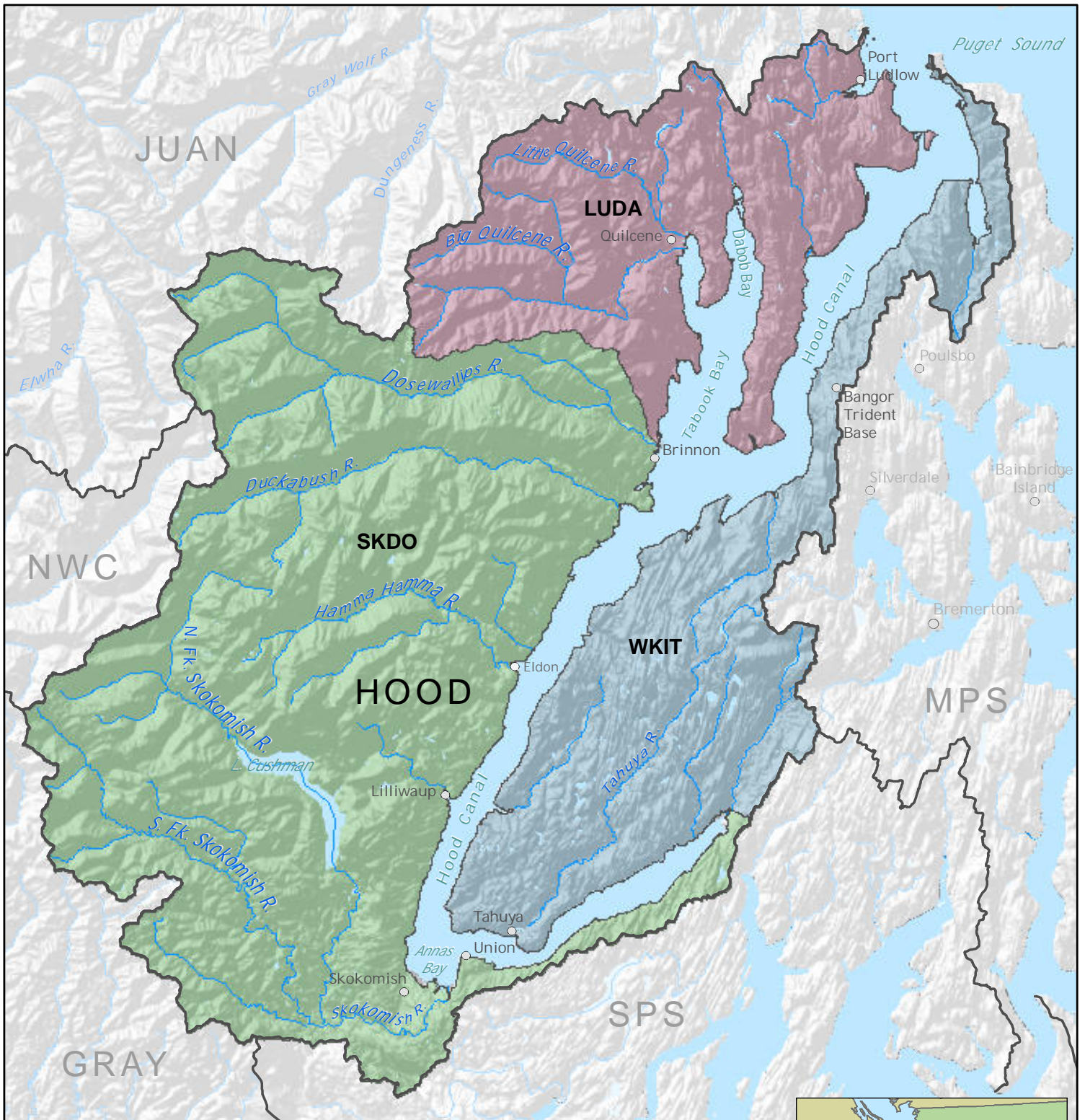


www.psmfc.org www.rmhc.org

Scale = 1:1,630,000
0 15 30 Miles

124°W 123°W 122°W 121°W












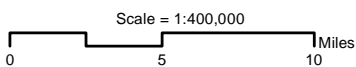
Washington Domain
Region HOOD: Hood Canal

July 2011

RMIS Basins

-  LUDA - Port Ludlow, Dabob Bay
-  SKDO - Skokomish R, Dosewallips R, Great Bend
-  WKIT - West Kitsap Peninsula
-  HOOD - Hood Canal; general

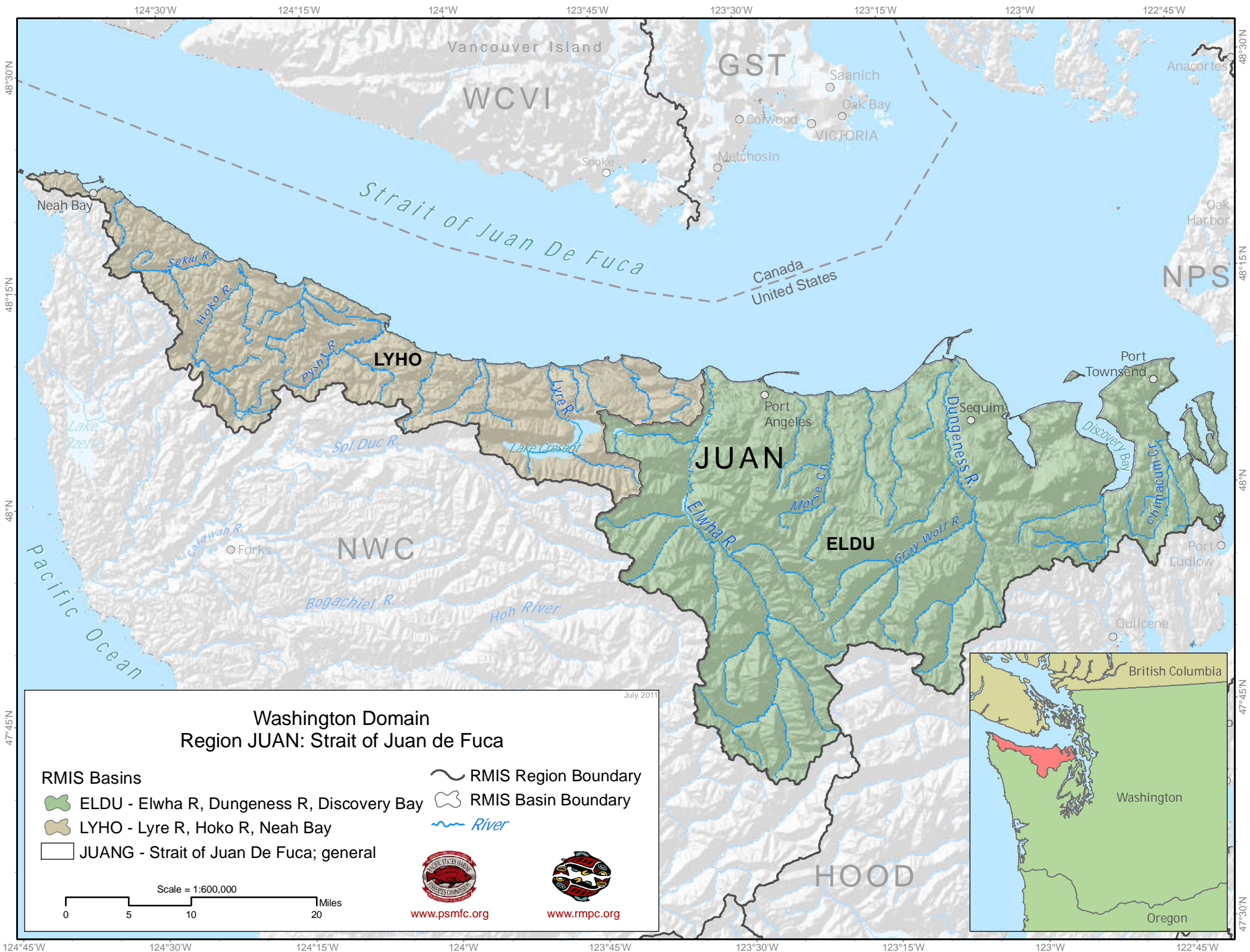
-  RMIS Basin Boundary
-  RMIS Region Boundary
-  River

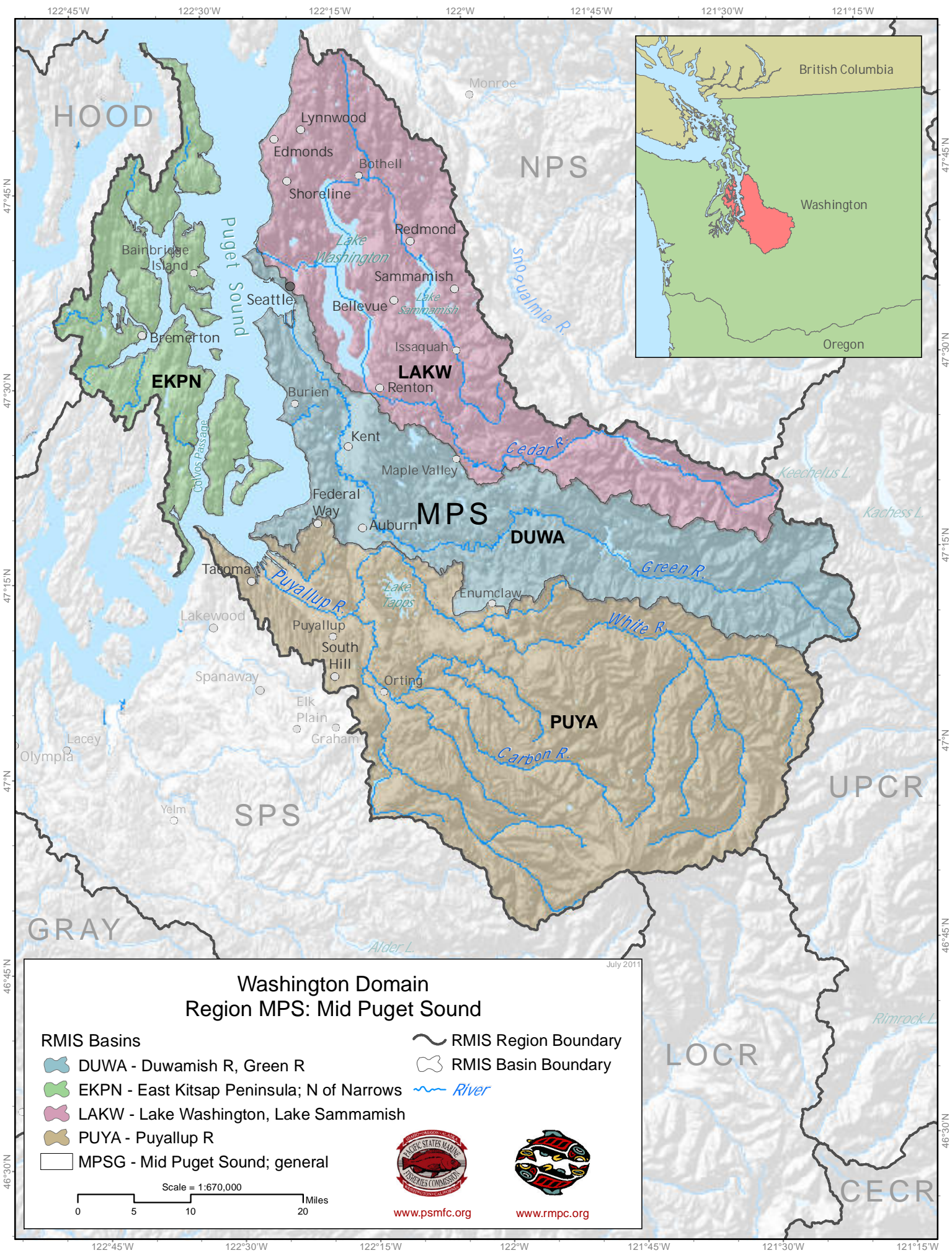


www.psmfc.org

www.rmpc.org







122°45'W

122°30'W

122°15'W

122°W

121°45'W

121°30'W

121°15'W

47°45'N

47°30'N

47°15'N

47°N

46°45'N

46°30'N

47°45'N

47°30'N

47°15'N

47°N

46°45'N

46°30'N

122°45'W

122°30'W

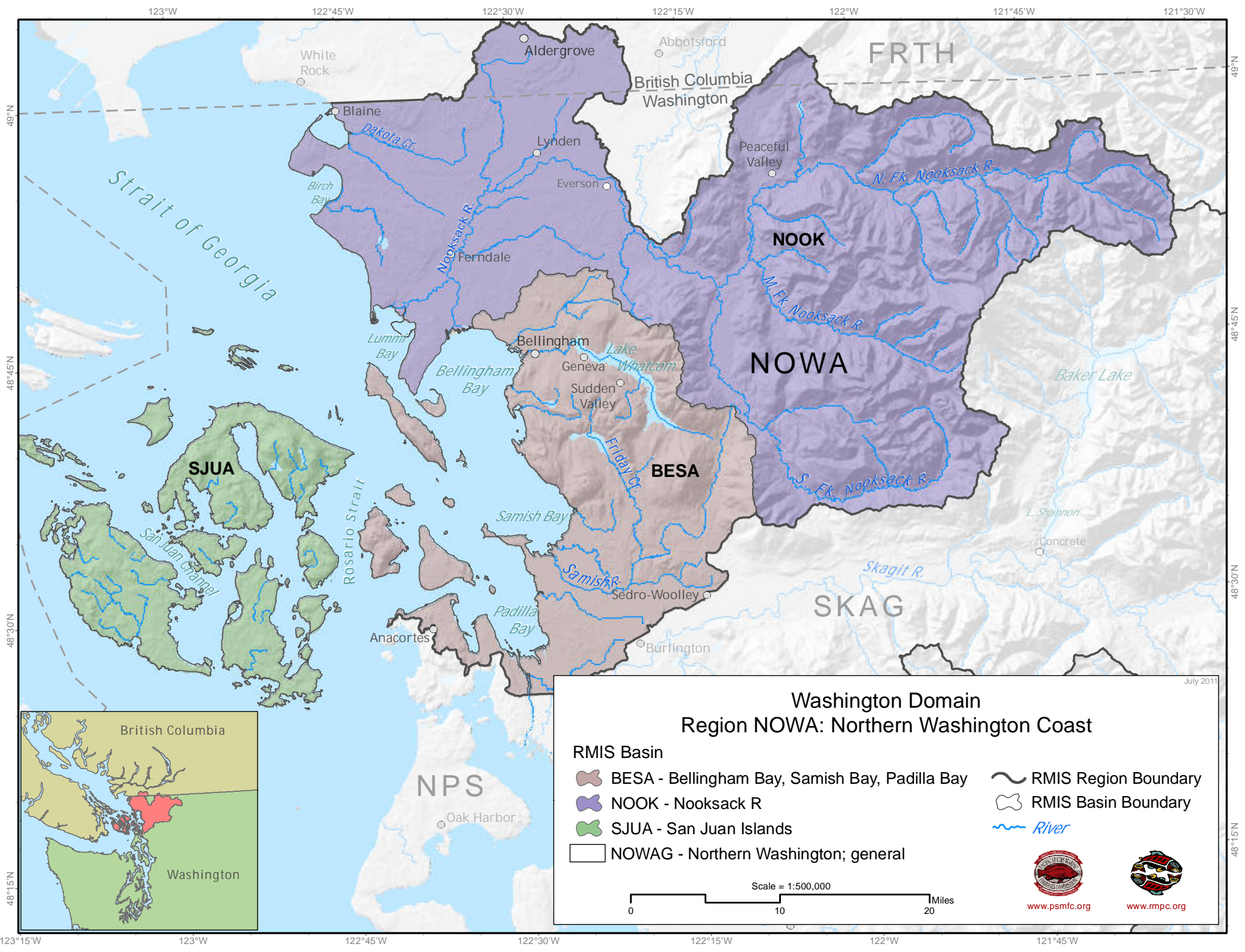
122°15'W

122°W

121°45'W





121°30'W




121°15'W

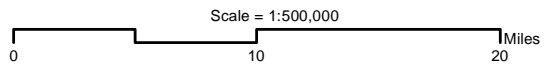


Washington Domain
Region NOWA: Northern Washington Coast

RMIS Basin

-  BESA - Bellingham Bay, Samish Bay, Padilla Bay
-  NOOK - Nooksack R
-  SJUA - San Juan Islands
-  NOWAG - Northern Washington; general

-  RMIS Region Boundary
-  RMIS Basin Boundary
-  River



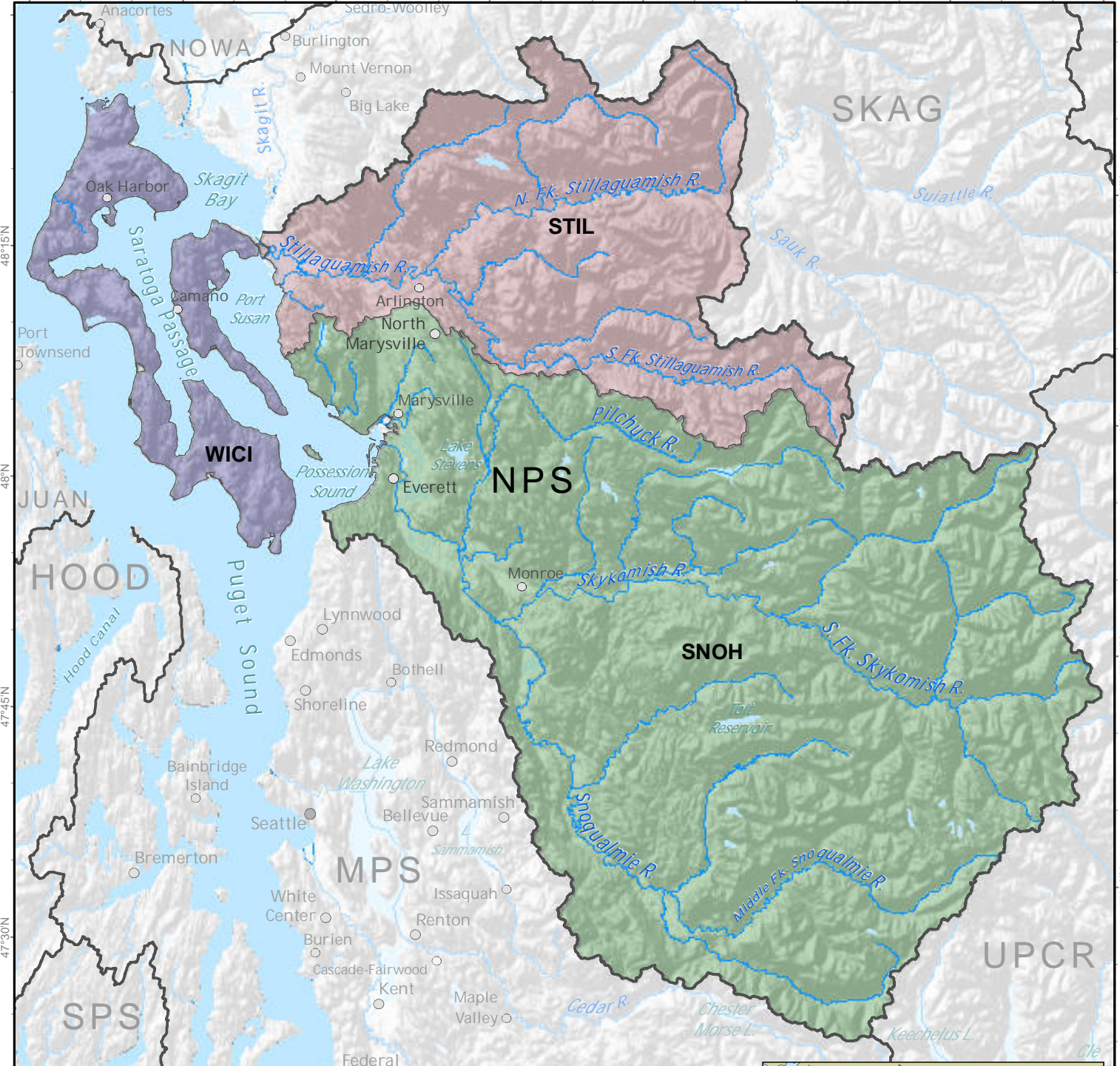
www.psmfc.org



www.mpc.org

July 2011

122°45'W 122°30'W 122°15'W 122°W 121°45'W 121°30'W 121°15'W 121°W



Washington Domain
Region NPS: Northern Puget Sound
 July 2011

RMIS Basins

- SNOH - Snohomish R
- STIL - Stillaguamish R
- WICI - Whidbey Island, Camano Islands
- NPSG - Northern Puget Sound; general
- RMIS Basin Boundary
- RMIS Region Boundary
- River

Scale = 1:675,000
 0 5 10 20 Miles

www.psmfc.org

www.rmpc.org





122°45'W 122°30'W 122°15'W 122°W 121°45'W 121°30'W 121°15'W


124°45'W 124°30'W 124°15'W 124°W 123°45'W 123°30'W 123°15'W




July 2011

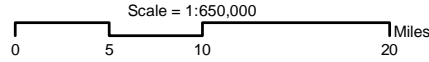
Washington Domain Region NWC: Northern Washington Coast

RMIS Basins

-  QEUQ - Queets R, Quinault R
-  QUHO - Quillayute R, Hoh R

 NWCG - Northern Washington Coast; general

-  RMIS Region Boundary
-  RMIS Basin Boundary
-  River



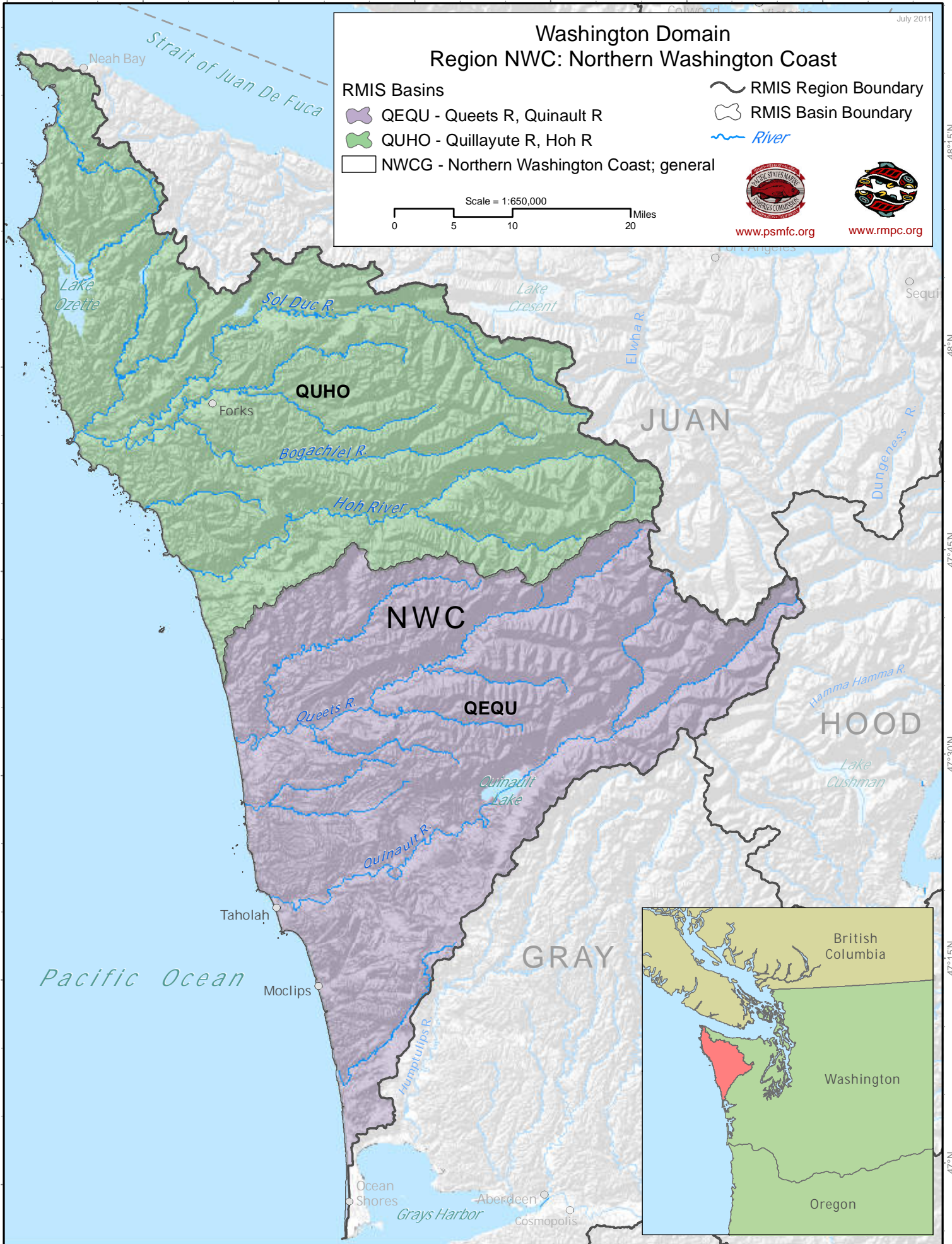
www.psmfc.org



www.rmpc.org

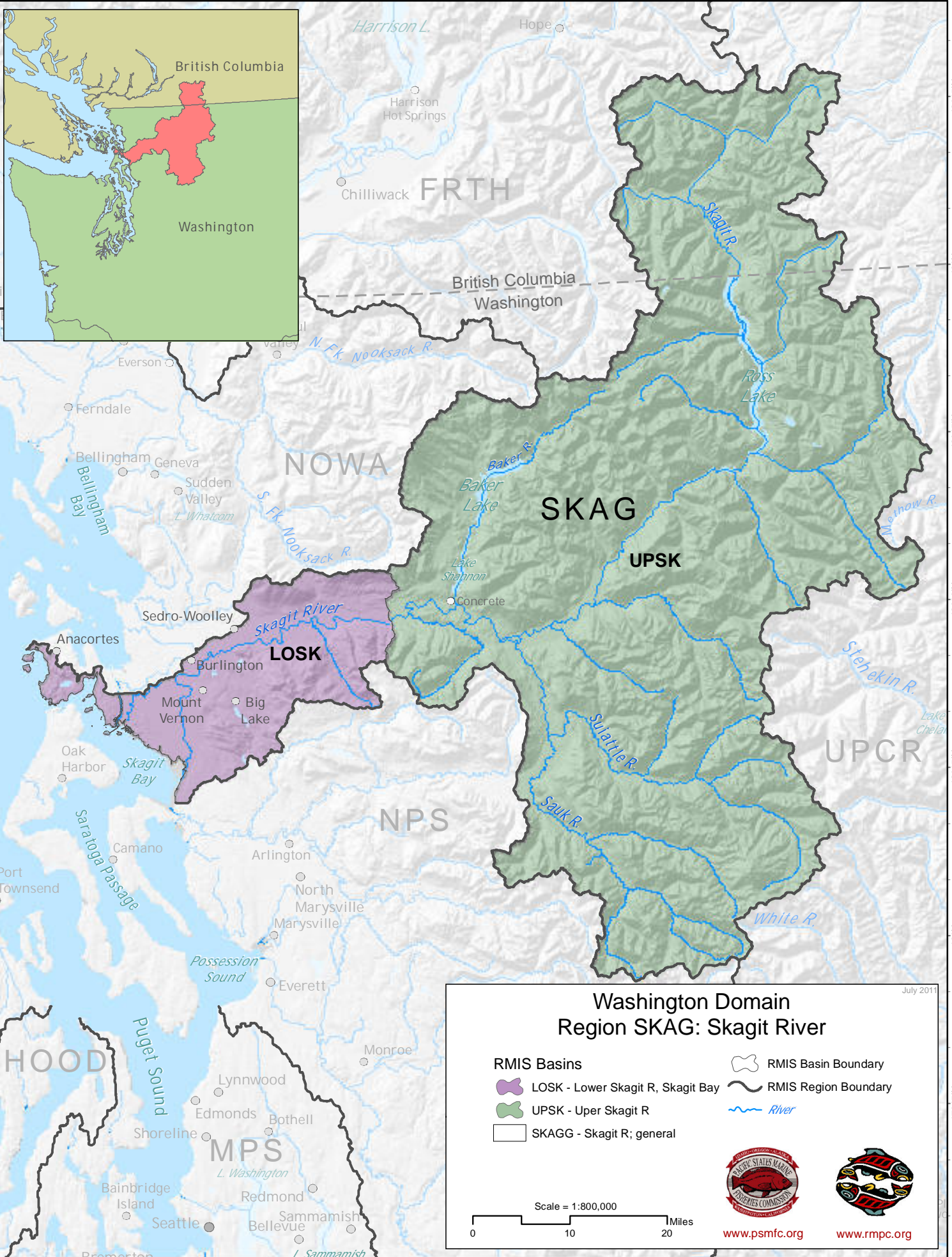
48°15'N
48°N
47°45'N
47°30'N
47°15'N
47°N

48°15'N
48°N
47°45'N
47°30'N
47°15'N
47°N



124°45'W 124°30'W 124°15'W 124°W 123°45'W 123°30'W 123°15'W

122°30'W 122°15'W 122°W 121°45'W 121°30'W 121°15'W 121°W 120°45'W



Washington Domain
Region SKAG: Skagit River
 July 2011

RMIS Basins

- LOSK - Lower Skagit R, Skagit Bay
- UPSK - Uper Skagit R
- SKAGG - Skagit R; general

Boundaries

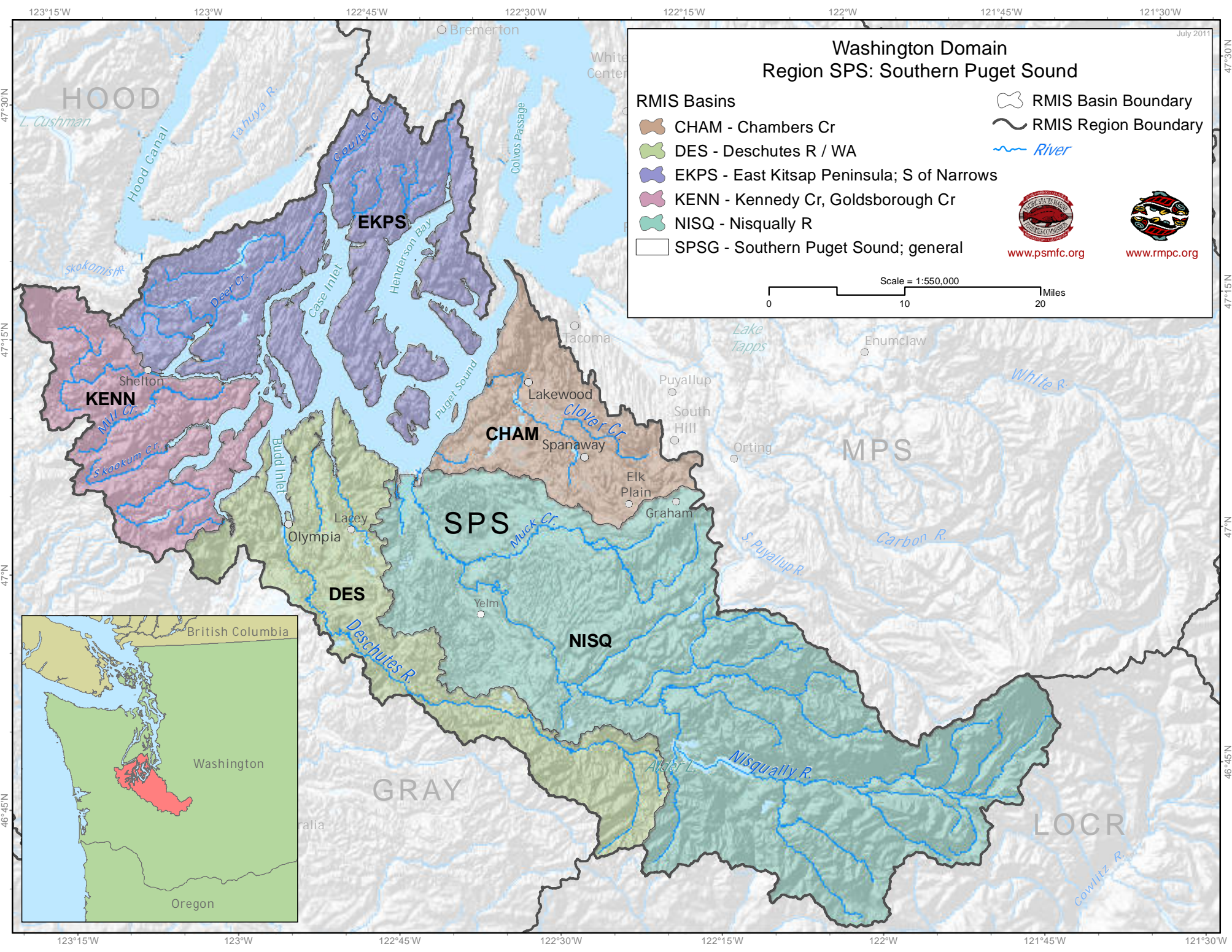
- RMIS Basin Boundary
- RMIS Region Boundary
- River

Scale = 1:800,000
 0 10 20 Miles

www.psmfc.org

www.rmrc.org

122°45'W 122°30'W 122°15'W 122°W 121°45'W 121°30'W 121°15'W 121°W 120°45'W





124°W

123°45'W

123°30'W

123°15'W

Grays Harbor

Cosmopolis O

GRAY

Westport

North River

NOSM

Smith Cr

Willapa R

Raymond

South Bend

WILP

WILR

Willapa Bay

PACIFIC OCEAN

Ocean Park

Long Beach

NASE

Naselle R

LOCR

Grays R



Wwaco

Columbia River

Warrenton

Astoria

NOOR

124°W

123°45'W

123°30'W

123°15'W

46°45'N

46°30'N

46°15'N

46°45'N

46°30'N

46°15'N